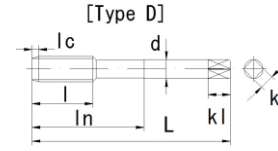
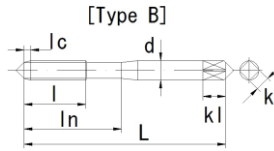


ミリねじ 深穴用スパイラルタップ Spiral Fluted Tap for Deep Holes (Metric)



①食付き長さ：2.5山 (Chamfer Length 2.5p) ②溝形状：45° 右刃1山 (Type of flute: 45° right spiral flute)
 ③材質：HSSE (Material) ④表面処理：ホモ (Surface: OX)

1. 止まり穴用。(For Blind Holes.) 2. 切りくずが、コイルのようにカールして排出される被削材に適します。(Suitable for the materials where chips come out continuously in coil shape.) 3. 止まり穴のネジ立て長さが通常よりも長く、切りくず等によりタップが損傷しやすい場合に使用します。また、雌ネジのかじりが発生しやすい場合にも効果があります。(Suitable for tapping blind holes where damage is caused by chip packing as well as in case where internal thread bites work material without difficulty.)

表5 M SFT DH OX

Table 5

*F：溝数。(Number of flutes) / HL：HL精度。(Hayasaka original thread limit)

(Unit: mm)

SIZE		CODE	L	l	ln	d	K	kl	Type	F	HL
Dia	Pitch										
M2	× 0.4	33231	40		-	3.0	2.5	5		2	1
M2.3	× 0.4	33232	42		-	3.0	2.5	5		2	1
M2.5	× 0.45	33233	44		-	3.0	2.5	5		2	1
M2.6	× 0.45	33234	44		-	3.0	2.5	5		2	1
M3	× 0.5	33235	46	5	19	4.0	3.2	6	B	3	2
M3	× 0.6	33236	46	5	19	4.0	3.2	6	B	3	2
M3.5	× 0.6	33237	48	6	20	4.0	3.2	6	B	3	2
M4	× 0.5	33238	52	7	21	5.0	4.0	7	B	3	2
M4	× 0.7	33239	52	7	21	5.0	4.0	7	B	3	2
M5	× 0.8	33240	60	8	24	5.5	4.5	7	B	3	2
M6	× 1	33241	62	10	29	6.0	4.5	7	B	3	2
M8	× 1.25	33242	70	13	37	6.2	5.0	8	D	3	2
M10	× 1.5	33243	75	15	41	7.0	5.5	8	D	3	2
M10	× 1.25	33244	75	15	41	7.0	5.5	8	D	3	2
M12	× 1.75	32454	82	18	48	8.5	6.5	9	D	3	2
M12	× 1.5	33246	82	18	48	8.5	6.5	9	D	3	2
M12	× 1.25	33247	82	18	48	8.5	6.5	9	D	3	2
M14	× 2	33248	88	20	48	10.5	8.0	11	D	3	2
M14	× 1.5	33249	88	20	48	10.5	8.0	11	D	3	2
M16	× 2	32615	95	20	52	12.5	10.0	13	D	3	2
M16	× 1.5	33251	95	20	52	12.5	10.0	13	D	3	2
M18	× 2.5	33252	100	25	55	14.0	11.0	14	D	4	3
M18	× 1.5	33253	100	25	55	14.0	11.0	14	D	4	3
M20	× 2.5	33254	105	25	58	15.0	12.0	15	D	4	3
M20	× 1.5	33255	105	25	58	15.0	12.0	15	D	4	2
M22	× 2.5	33256	115	25	63	17.0	13.0	16	D	4	3
M22	× 1.5	33257	115	25	63	17.0	13.0	16	D	4	2
M24	× 3	33258	120	30	66	19.0	15.0	18	D	4	3
M24	× 1.5	33259	120	30	66	19.0	15.0	18	D	4	2
M27	× 3	33260	130	30	71	20.0	15.0	18	D	4	3
M27	× 1.5	33261	130	30	71	20.0	15.0	18	D	4	2
M30	× 3.5	33262	135	35	74	23.0	17.0	20	D	4	3
M30	× 1.5	33263	135	35	74	23.0	17.0	20	D	4	2
M33	× 3.5	33264	145	28	77	25.0	19.0	22	D	4	3
M33	× 1.5	33265	145	20	77	25.0	19.0	22	D	4	3
M36	× 4	33266	155	32	82	28.0	21.0	24	D	4	4
M36	× 1.5	33267	155	20	82	28.0	21.0	24	D	4	3